

NAVIGATOR

Dilution Control System

Why It's A Better System

- Concentrate and RTU labels are numbered and color coded for safety and to facilitate training
- Closed system - Spill proof container
- New Metered Tip with each concentrate provides proper dilution each time
- English/Spanish label copy
- Each concentrate has an easy carry handle
- Recyclable container

Why It's A Better Cleaner

- Institutional strength glass cleaner - Removes smudges and greasy fingerprints
- Multi-surface cleaner - Use on glass, chrome, plastic and more
- Anti-fogging property - Provides a clear surface
- Nonammoniated - Effective cleaner without harsh odor
- Fast drying - No streaks, no film
- Nonstatic - Repels dust
- Mild floral fragrance - Pleasant to use

How It Cleans



Dispense precisely diluted glass cleaner into an empty and properly labeled NAVIGATOR RTU #2 Glass Cleaner container.



Spray a light mist or wipe on automatically diluted solution onto surface to be cleaned.



Polish dry with a clean, dry, soft wiper. Always pretest painted surfaces in an inconspicuous spot for colorfastness. (Not recommended for wood surfaces.)

Navigator Dispensers

- Low-Flow Dispenser Product No. 13172
- High-Flow Dispenser Product No. 13173
- Dispenser Connector Kit Product No. 13182

2 GLASS CLEANER

Where It Cleans

- Windows
- Mirrors
- Chrome
- Aluminum
- Stainless steel
- Glazed porcelain
- Glass
- Enamel
- Plastic
- Appliances
- Virtually every hard surface

Technical Data

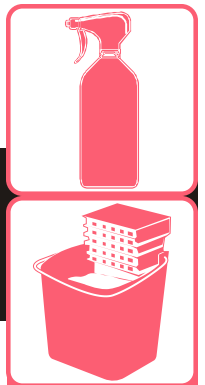
Packaging (concentrate)	2/2 Liters per case
Product Number	13155
Concentrate Color	Dark Blue
RTU Color	Light Blue
RTU Fragrance	Floral
Foaming	Moderate
Free-Rinsing	Yes
Ammoniated	No
Caustic	None
% Phosphates	None
RTU pH	7.0
RTU Yield Low-Flow	88 Quarts per case
RTU Yield High-Flow	22 Gallons per case



NAVIGATOR 2-Liter bottles are designed to be used in the NAVIGATOR Dilution Control System.

NAVIGATOR

Dilution Control System



Why It's A Better System

- Concentrate and RTU labels are numbered and color coded for safety and to facilitate training
- Closed system - Spill proof container
- New Metered Tip with each concentrate provides proper dilution each time
- English/Spanish label copy
- Each concentrate has an easy carry handle
- Recyclable container

Why It's A Better Cleaner

- Non-acid formula - Safe on surfaces for everyday use
- Fresh floral deodorant - Leaves room smelling fresh and clean
- Free rinsing - Easy to use, saves labor
- Foaming cleaning power - Use on vertical surfaces

How It Cleans



Dispense precisely diluted glass cleaner into an empty and properly labeled NAVIGATOR RTU #5 Non-Acid Bath & Bowl Cleaner container.



TOILET BOWLS

Remove water from bowl. Pour 1-2 oz. on applicator or spray directly on bowl sides.



For best results allow to dwell 5 minutes. Flush and rinse out applicator.



FOR HARD NON-POROUS SURFACES:

Spray, apply by sponge, or mop on surface, let soak for five minutes, agitate until clean. Rinse and allow to dry. Replace solution when it becomes diluted or visibly dirty.



Navigator Dispensers

- Low-Flow Dispenser Product No. 13172
- High-Flow Dispenser Product No. 13173
- Dispenser Connector Kit Product No. 13182

5 NON-ACID BATH & BOWL CLEANER

Where It Cleans

Recommended for cleaning and deodorizing:

- Toilet bowls
- Urinals
- Chrome
- Glazed ceramic
- Sinks
- Most hard surfaces

Technical Data

Packaging (concentrate)	2/2 Liters per case
Product Number	13156
Concentrate Color	Red
RTU Color	Dark Pink
RTU Fragrance	Floral
Foaming	Moderate
Free-Rinsing	Yes
% Phosphates	None
Acid Content	None
Caustics	None
RTU pH	6.3
RTU Yield Low-Flow	96 Quarts per case
RTU Yield High-Flow	31 Gallons per case



NAVIGATOR 2-Liter bottles are designed to be used in the NAVIGATOR Dilution Control System.

NAVIGATOR

Dilution Control System



Why It's A Better System

- Concentrate and RTU labels are numbered and color coded for safety and to facilitate training
- Closed system - Spill proof container
- New Metered Tip with each concentrate provides proper dilution each time
- English/Spanish label copy
- Each concentrate has an easy carry handle
- Recyclable container

Why It's A Better Cleaner

- Quickly emulsifies oily soils - Suspends soils for easy removal
- Non-butyl, solvent free, non flammable - Safer to use
- Works on any oily soil - One product does more jobs, so you have less inventory and easier training
- Low odor formulation - Use in enclosed or confined areas
- Heavy duty cleaning power - for tough industrial/greasy soils

How It Cleans



Dispense precisely diluted cleaner into a clean, empty container. If solution is for reuse, properly label NAVIGATOR RTU #7 Heavy Duty Cleaner container.



Liberally apply by sponge or spray onto surface to be cleaned. Scrub or soak as needed. **Rinse** with water thoroughly. Replace solution when it becomes visibly dirty. (Pretest surfaces for colorfastness. **Not recommended** for wood, aluminum, or glass surfaces. Finished floor may require buffing or recoating.)



For concrete or unfinished floors apply by mop or auto-scrubber. Scrub as needed rinse with water. Replace solution when it becomes visibly dirty.

Navigator Dispensers

- Low-Flow Dispenser Product No. 13172
- High-Flow Dispenser Product No. 13173
- Dispenser Connector Kit Product No. 13182

7 HEAVY DUTY CLEANER

Where It Cleans

- Glazed porcelain
- Stainless steel
- Vent hoods
- Food service areas
- Enameled metal
- Terrazzo, granite, concrete, ceramic tile
- Shop tools, equipment and machinery
- High traffic areas

Technical Data

Packaging (concentrate)	2/2 Liters per case
Product Number	13158
Concentrate Color	Yellow-Orange
RTU Color	Yellow
RTU Fragrance	None Added
Foaming	Moderate
Free-Rinsing	Yes
% Phosphates	None
Caustics	Yes
RTU pH	11.7
RTU Yield Low-Flow	276 Quarts per case
RTU Yield High-Flow	69 Gallons per case



NAVIGATOR 2-Liter bottles are designed to be used in the NAVIGATOR Dilution Control System.



NAVIGATOR

Dilution Control System

Why It's A Better System

- Concentrate and RTU labels are numbered and color coded for safety and to facilitate training
- Closed system - Spill proof container
- New Metered Tip with each concentrate provides proper dilution each time
- English/Spanish label copy
- Each concentrate has an easy carry handle
- Recyclable container

Why It's A Better Cleaner

- Neutral pH - No rinse cleaner
- All surface safe - Gently cleans for daily use
- Designed as a floor cleaner - Safe on high gloss floor finishes; won't dull finish
- Used daily - Provides longer wear of floor finishes
- Versatile - Clean any surface not harmed by water
Floral fragrance - Pleasant to use
- Free rinsing - Will not leave dulling soap film

How It Cleans



Place wet floor signs in area to be cleaned. Remove gross soils and debris.



Dispense precisely diluted NAVIGATOR #8 Neutral Floor Cleaner into clean mop bucket or auto scrubber tank.



Apply automatically diluted solution. Replace solution when it becomes visibly dirty. No rinse is required.



If area is heavily soiled, use scrubbing machine or agitate with stiff brush. Heavily soiled areas may require rinsing. (Not recommended for wood surfaces or for use on floors where oily floor sweep or dust collection spray has been use. Always pretest painted surfaces for colorfastness.)

Navigator Dispensers

Low-Flow Dispenser Product No. 13172
 High-Flow Dispenser Product No. 13173
 Dispenser Connector Kit Product No. 13182

8 NEUTRAL FLOOR CLEANER

Where It Cleans

- Finished floors
- Marble, slate, and granite
- Terrazzo
- Travertine
- Linoleum
- Vinyl composition tile
- Ceramic tile
- Concrete floors
- Any surface not harmed by water alone

Technical Data

Packaging (concentrate) 2/2 Liters per case
 Product Number 13159
 Concentrate Color Green
 RTU Color Light Green
 RTU Fragrance Floral
 Foaming Moderate
 Free-Rinsing Yes
 % Phosphates None
 Petroleum Distillates None
 RTU pH 7.2
 RTU Yield Low-Flow 2,336 Quarts per case
 RTU Yield High-Flow 463 Gallons per case



NAVIGATOR 2-Liter bottles are designed to be used in the NAVIGATOR Dilution Control System.



NAVIGATOR

Dilution Control System

Why It's A Better System

- Concentrate and RTU labels are numbered and color coded for safety and to facilitate training
- Closed system - Spill proof container
- New Metered Tip with each concentrate provides proper dilution each time
- English/Spanish label copy
- Each concentrate has an easy carry handle
- Recyclable container

Why It's A Better Cleaner

- Broad spectrum efficacy - Kills a wide range of organisms including HIV-1, MRSA, HBV and HCV.
- Multi-purpose detergent - Cleans soils from many hard surfaces
- Quaternary based - Hospital grade disinfectant
- Water based, nonalkaline formula - Safe for use on inanimate washable surfaces

How It Cleans



Dispense precisely diluted cleaner into a clean, empty container. If solution is for reuse, properly label NAVIGATOR RTU #9 Multi-Purpose Disinfectant container.



CLEAN AND DISINFECT:
Remove gross soil mechanically before cleaning begins.



Apply solution with wiper, mop or sponge, making sure to wet all surfaces thoroughly.



Scrub. Discard solution when it becomes dirty and replace with fresh solution.



Allow surfaces to remain wet for 10 minutes. Remove excess liquid and let air dry.

Navigator Dispensers

Low-Flow Dispenser Product No. 13172
 High-Flow Dispenser Product No. 13173
 Dispenser Connector Kit Product No. 13182

9 MULTI-PURPOSE DISINFECTANT

EPA Registered Disinfectant

Where It Cleans

- Floors, walls
- Mirrors, glass
- Metal surfaces
- Conductive flooring
- Painted surfaces
- Exterior bowl surfaces
- Empty basins
- Non-critical medical devices
- Hair/nail care instruments
- Showers, lavatory fixtures
- Tanning beds
- Other hard, Nonporous surfaces

Technical Data

Packaging (concentrate) 2/2 Liters per case
 Product Number 13160
 Concentrate Color Light Blue
 RTU Color Light Blue Tint
 RTU Fragrance Fresh Clean
 Foaming Low-Moderate
 Free-Rinsing Yes
 % Phosphates None
 RTU pH 7.0
 EPA Registered Yes
 RTU Yield Low-Flow 972 Quarts per case
 RTU Yield High-Flow 243 Gallons per case

Efficacy

Pseudomonas aeruginosa,
Staphylococcus aureus,
Salmonella choleraesuis,
Escherichia coli,
Staphylococcus aureus
 (MRSA), *Staphylococcus aureus*
 (VISA), *Streptococcus pyogenes*,
Enterococcus faecalis
 (VRE), Canine distemper,
 Feline leukemia, Hepatitis B
 (HBV), Hepatitis C (HCV),
 Herpes simplex type 1 & 2,
 HIV-1 (AIDS virus),
 Pseudorabies, and many more.



NAVIGATOR 2-Liter bottles are designed to be used in the NAVIGATOR Dilution Control System.



NAVIGATOR

Dilution Control System

Why It's A Better System

- Concentrate and RTU labels are numbered and color coded for safety and to facilitate training
- Closed system - Spill proof container
- New Metered Tip with each concentrate provides proper dilution each time
- English/Spanish label copy
- Each concentrate has an easy carry handle
- Recyclable container

Why It's A Better Cleaner

- Industrial strength - Fights the most objectionable odors
- Pleasant lingering fragrance - Freshens the room for hours
- Versatile - Add to cleaning solutions
- No formaldehyde - Does not desensitize nasal passages
- Waterbased, neutral pH- Nonstaining

How It Cleans



Dispense precisely diluted deodorizer into an empty and labeled NAVIGATOR RTU #10 Spray-Mist Deodorizer container.



Point spray nozzle toward center of room and spray automatically diluted solution. (Not recommended for any surface harmed by water.)

Navigator Dispensers

Low-Flow Dispenser Product No. 13172
 High-Flow Dispenser Product No. 13173
 Dispenser Connector Kit Product No. 13182

10

SPRAY-MIST DEODORIZER

Where It Cleans

- Hotel rooms
- Classrooms
- Bathrooms
- Lounges
- Meeting rooms
- Offices
- Patient rooms
- Closets
- Mop water

Technical Data

Packaging (concentrate) 2/2 Liters per case
 Product Number 13161
 Concentrate Color Pale Yellow
 RTU Color Colorless
 RTU Fragrance Fresh Clean
 RTU VOC >1%
 RTU pH 7.0
 RTU Yield Low-Flow 128 Quarts per case
 RTU Yield High-Flow 32 Gallons per case



NAVIGATOR 2-Liter bottles are designed to be used in the NAVIGATOR Dilution Control System.



NAVIGATOR

Dilution Control System

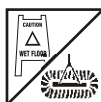
Why It's A Better System

- Concentrate and RTU labels are numbered and color coded for safety and to facilitate training
- Closed system - Spill proof container
- New Metered Tip with each concentrate provides proper dilution each time
- English/Spanish label copy
- Each concentrate has an easy carry handle
- Recyclable container

Why It's A Better Cleaner

- Low foam - Designed for use in auto scrubbers
- Neutral pH - No rinse cleaner
- Will not leave dulling soap film - Safe on high gloss floor finishes
- Versatile - Clean any surface not harmed by water
Fresh spice fragrance - Pleasant to use

How It Cleans



Place wet floor signs in area to be cleaned. Remove gross soils and debris.



Dispense precisely diluted NAVIGATOR #11 Auto Scrubber Low Foam Floor Cleaner into auto scrubber tank.



Clean floor with auto scrubber using manufactures instructions. No rinse needed.

-or-



Apply solution with damp mopping or sponge. Agitate as necessary. Allow to dry. No rinse needed.

Not recommended for wood surfaces.

Navigator Dispensers

- Low-Flow Dispenser Product No. 13172
- High-Flow Dispenser Product No. 13173
- Dispenser Connector Kit Product No. 13182

11 AUTO SCRUBBER LOW FOAM FLOOR CLEANER

Where It Cleans

- Any surface not harmed by water alone
- Marble, slate, and granite
- Terrazzo
- Travertine
- Linoleum
- Vinyl composition tile
- Finished floors
- Ceramic tile
- Concrete floors

Technical Data

Packaging (concentrate)	2/2 Liters per case
Product Number	13162
Concentrate Color	Red-Orange
RTU Color	Light Orange
RTU Fragrance	Fresh Spice
Foaming	Low
Free-Rinsing	Yes
% Phosphates	None
Caustics	None
RTU pH	7.0
RTU Yield Low-Flow	1,664 Quarts per case
RTU Yield High-Flow	590 Gallons per case



NAVIGATOR 2-Liter bottles are designed to be used in the NAVIGATOR Dilution Control System.



NAVIGATOR

Dilution Control System

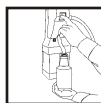
Why It's A Better System

- Concentrate and RTU labels are numbered and color coded for safety and to facilitate training
- Closed system - Spill proof container
- New Metered Tip with each concentrate provides proper dilution each time
- English/Spanish label copy
- Each concentrate has an easy carry handle
- Recyclable container

Why It's A Better Cleaner

- Super powerful degreaser - Cuts tough greasy dirt
- Non-butyl, solvent free, non flammable - Safer to use
- Quickly emulsifies oily soils - Works fast on the toughest dirt and grime.
- Works on any oily soil - One product does more jobs, so you have less inventory and easier training
- Fresh fragrance - Leaves area smelling clean

How It Cleans



Dispense precisely diluted cleaner into a clean, empty container. If solution is for reuse, properly label NAVIGATOR RTU #13 Super Duty Degreaser container.



Liberally apply by sponge or spray onto surface to be cleaned. Allow to soak 2-3 minutes. Scrub if soil is heavy.



Wipe clean and Rinse with water thoroughly. Replace solution when it becomes visibly dirty. (Pretest surfaces for colorfastness. Not recommended for wood, aluminum, or glass surfaces. Finished floors may require buffing or recoating after spot cleaning.)

Navigator Dispensers

Low-Flow Dispenser Product No. 13172
 High-Flow Dispenser Product No. 13173
 Dispenser Connector Kit Product No. 13182

13 SUPER DUTY DEGREASER

Where It Cleans

- Ceramic tile
- Glazed porcelain
- Stainless steel
- Food service areas
- Terrazzo, granite, concrete
- Enameled metal
- Shop tools, equipment and machinery

Technical Data

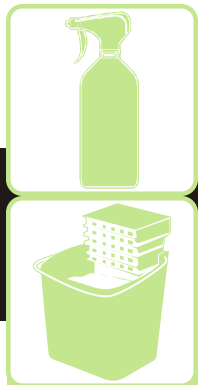
Packaging (concentrate)	2/2 Liters per case
Product Number	13163
Concentrate Color	Orange
RTU Color	Orange
RTU Fragrance	Fresh Clean
Foaming	Moderate
Free-Rinsing	Yes
% Phosphates	None
Caustics	Yes
RTU pH	12.9
RTU Yield Low-Flow	80 Quarts per case
RTU Yield High-Flow	36 Gallons per case



NAVIGATOR 2-Liter bottles are designed to be used in the NAVIGATOR Dilution Control System.

NAVIGATOR

Dilution Control System



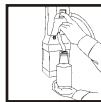
Why It's A Better System

- Concentrate and RTU labels are numbered and color coded for safety and to facilitate training
- Closed system - Spill proof container
- New Metered Tip with each concentrate provides proper dilution each time
- English/Spanish label copy
- Each concentrate has an easy carry handle
- Recyclable container

Why It's A Better Cleaner

- Removes alkalinity, soap film, and grime - Cleans tough soils fast
- Non abrasive - Non scratching, won't dull Mild acid formula - Will not harm plated fixtures
- Waterbased - Nonflammable, noncorrosive

How It Cleans



Dispense precisely diluted cleaner into a clean, empty container. If solution is for reuse, properly label NAVIGATOR RTU #14 Tough Duty Bathroom Cleaner container.



HARD NON-POROUS SURFACES:
Liberally apply by mop, sponge, or spray onto surface to be cleaned. Scrub if soil is heavy. Rinse with water thoroughly.



Replace solution when it becomes visibly dirty. (Pretest surfaces for colorfastness. Not recommended for wood, aluminum, or glass surfaces.)



TOILET BOWL CLEANER:
Force water from bowl. Pour solution on applicator. Clean entire unit, especially under rim. Flush.

Navigator Dispensers

- Low-Flow Dispenser Product No. 13172
 High-Flow Dispenser Product No. 13173
 Dispenser Connector Kit Product No. 13182

14 TOUGH DUTY BATHROOM CLEANER

Where It Cleans

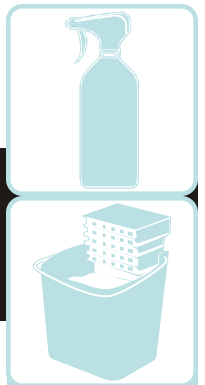
- Ceramic tile
- Glazed porcelain
- Stainless steel
- Chrome
- Slate quarry tile
- Shower and shower doors
- Toilet bowls
- Sinks and tubs
- Kitchens

Technical Data

Packaging (concentrate)	2/2 Liters per case
Product Number	13164
Concentrate Color	Green
RTU Color	Light Green
RTU Fragrance	Citrus Floral
Foaming	Low
Free-Rinsing	Yes
% Phosphates	None
Acid (concentrate)	11% Glycolic
Caustics	Yes
RTU pH	2.2
RTU Yield Low-Flow	56 Quarts per case
RTU Yield High-Flow	48 Gallons per case



NAVIGATOR 2-Liter bottles are designed to be used in the NAVIGATOR Dilution Control System.



NAVIGATOR

Dilution Control System

Why It's A Better System

- Concentrate and RTU labels are numbered and color coded for safety and to facilitate training
- Closed system - Spill proof container
- New Metered Tip with each concentrate provides proper dilution each time
- English/Spanish label copy
- Each concentrate has an easy carry handle
- Recyclable container

Why It's A Better Cleaner

- Professional strength glass cleaner - Removes smudges and greasy fingerprints fast
- High yield - economical
- Multi-surface cleaner - One cleaner for many surfaces
- Anti-fogging property - Provide a clear surface
- Nonammoniated - Effective without harsh odor Fast drying - No streaks, no film
- Nonstatic - Repels dust
- Mild lavender fragrance - Pleasant to use

How It Cleans



Dispense precisely diluted cleaner into an empty and labeled NAVIGATOR RTU #15 Glass and Surface Cleaner container.



Spray a light mist or wipe-on automatically diluted solution onto surface to be cleaned.



Polish dry with a clean, dry, soft wiper. Always pretest painted surfaces in an inconspicuous spot for colorfastness. Not recommended for wood surfaces.

Navigator Dispensers

- Low-Flow Dispenser Product No. 13172
 High-Flow Dispenser Product No. 13173
 Dispenser Connector Kit Product No. 13182

15 GLASS AND SURFACE CLEANER

Where It Cleans

Recommended for:

- Windows
- Mirrors
- Chrome
- Aluminum
- Stainless steel
- Glazed porcelain
- Glass
- Enamel
- Plastic
- Appliances
- Virtually every hard surface

Technical Data

Packaging (concentrate)	2/2 Liters per case
Product Number	13165
Concentrate Color	Blue
RTU Color	Light Blue
RTU Fragrance	Light Lavender
Foaming	Moderate
Free-Rinsing	Yes
Ammoniated	No
Caustic	None
% Phosphates	None
RTU pH	7.0
RTU Yield Low-Flow	360 Quarts per case
RTU Yield High-Flow	90 Gallons per case



NAVIGATOR 2-Liter bottles are designed to be used in the NAVIGATOR Dilution Control System.



NAVIGATOR

Dilution Control System

Why It's A Better System

- Concentrate and RTU labels are numbered and color coded for safety and to facilitate training
- Closed system - Spill proof container
- New Metered Tip with each concentrate provides proper dilution each time
- English/Spanish label copy
- Each concentrate has an easy carry handle
- Recyclable container

Why It's A Better Cleaner

- Industrial strength - Fights the most objectionable odors
- Pleasant lingering fragrance - Freshens the room for hours
- Versatile - Add to cleaning solutions
- No formaldehyde - Does not desensitize nasal passages
- Water-based - Non-staining, neutral pH

How It Cleans



Dispense precisely diluted deodorizer into an empty and labeled NAVIGATOR RTU #18 Spray-Mist Floral Deodorizer container.



Point spray nozzle toward center of room and spray automatically diluted solution. Not recommended for any surface harmed by water.

Navigator Dispensers

Low-Flow Dispenser Product No. 13172
 High-Flow Dispenser Product No. 13173
 Dispenser Connector Kit Product No. 13182

18

SPRAY-MIST FLORAL DEODORIZER

Where It Cleans

- Hotel rooms
- Classrooms
- Bathrooms
- Lounges
- Meeting rooms
- Offices
- Patient rooms
- Closets
- Mop water

Technical Data

Packaging (concentrate) 2/2 Liters per case
 Product Number 13166
 Concentrate Color Pale Yellow
 RTU Color Colorless
 RTU Fragrance Floral
 RTU VOC >1%
 RTU pH 7.0
 RTU Yield Low-Flow 136 Quarts per case
 RTU Yield High-Flow 34 Gallons per case



NAVIGATOR 2-Liter bottles are designed to be used in the NAVIGATOR Dilution Control System.

NAVIGATOR

Dilution Control System



Product Description

Atlas is a hydrogen peroxide, multi-purpose cleaner degreaser and is formulated to meet strict environmentally preferable requirements without sacrificing performance. It is also an effective odor neutralizer against the toughest malodors in grease traps, drains and disposals. It can be used in a mop and bucket, auto scrubber and pressure washer application. It is effective against both oil and water based soils and leaves no sticky or soapy residue to attract soils. The low odor feature of this product makes it a pleasant product to use.

Atlas Multi-Purpose Cleaner Degreaser has been 3rd party certified by Green Seal™ according to GS -37 Environmental Standard and is recognized by the U.S. Environmental Protection Agency Design for the Environment (DfE) Formulator Initiative.

Why It's A Better Cleaner

- Pleasant fragrance - Desirable to use
- Multi-purpose - Varied applications
- Non filming - Leaves no sticky residue
- Concentrated formula - Economical to use
- Cold water effective - Energy savings

How It Cleans

This product is formulated to work effectively with cold water. Cold water is recommended to help save energy used to heat water.



1. Dispense precisely diluted multi-purpose cleaner degreaser into an empty and properly labeled Navigator RTU #23 Atlas Multi-Purpose Cleaner Degreaser container.



2. Apply solution to surface to be cleaned.
3. Allow this product time to penetrate and disperse the soil and contaminant.



4. Scrubbing with a sponge, cloth, pad or brush may speed up the cleaning action.
5. Once soils are loosened simply wipe or wash away with a cloth or water. No rinsing is necessary.



* This product meets the Green Seal™ environmental standard for industrial and institutional cleaners based on its reduced human and aquatic toxicity and reduced smog production potential.



* This product meets the Green Seal™ environmental standard for industrial and institutional cleaners based on its reduced human and aquatic toxicity and reduced smog production potential.
* Este producto cumple con los requisitos de Green Seal™, en cuanto a su norma ecológica para limpiadores industriales e institucionales, según su toxicidad reducida para los seres humanos y la vida acuática y su potencial de smog restringido.

23 ATLAS MULTI-PURPOSE CLEANER DEGREASER

Where It Cleans

Atlas Multi-Purpose Cleaner Degreaser can be used in any facility where an environmentally preferred product is desired for floors, walls, counter tops, cabinets, painted surfaces, glazed porcelain, stainless steel, vent hoods, food service areas, enameled metal, terrazzo, granite, concrete, ceramic tile and high traffic areas. It is also an effective product against undesirable odors in restrooms, locker rooms and institutional kitchens. The low odor qualities of this product makes it a most desirable product for health care facilities.

Technical Data

Packaging (concentrate)	2/2 Liters per case
Product Number	13167
Physical State	Liquid
Color	Clear Orange
Odor	Low
pH	4.5 - 5.5
VOC's	< 1%
Foam Level	Low
Freeze/Thaw Stability	Excellent
Solubility in Water	Complete
RTU Yield Low-Flow	516 Quarts per case
RTU Yield High-Flow	129 Gallons per case



NAVIGATOR 2-Liter bottles are designed to be used in the NAVIGATOR Dilution Control System.



NAVIGATOR

Dilution Control System



Product Description

Compass is a hydrogen peroxide, neutral floor cleaner and is formulated to meet strict environmentally preferable requirements without sacrificing performance. Compass is used with auto scrubbers and is an ideal product to use on polished floors to eliminate the soil and protect the shine. It quickly removes soils without dulling, damaging, etching or harming floor finishes. It is an effective cleaner for most surfaces where a neutral range pH is desirable.

Compass Neutral Floor Cleaner has been 3rd party certified by Green Seal™ according to GS-37 Environmental Standard and is recognized by the U.S. Environmental Protection Agency Design for the Environment (DfE) Formulator Initiative.

Why It's A Better Cleaner

- Green Seal Certified - Environmentally preferred
- Concentrated - Economical to use
- Non toxic to humans and aquatic life - Safe for the environment

How It Cleans

This product is formulated to work effectively with cold water. Cold water is recommended to help save energy used to heat water.



1. Dispense precisely diluted Navigator RTU #24 Compass Neutral Floor Cleaner into clean mop bucket or auto scrubber tank.



2. Apply solution to surface to be cleaned.
3. Allow this product time to penetrate and disperse the soil and contaminant.



4. Scrubbing with a sponge, cloth, pad or brush may speed up the cleaning action.
5. Once soils are loosened simply wipe or wash away with a cloth or water. No rinsing is necessary.



* This product meets the Green Seal™ environmental standard for industrial and institutional cleaners based on its reduced human and aquatic toxicity and reduced smog production potential.



* This product meets the Green Seal™ environmental standard for industrial and institutional cleaners based on its reduced human and aquatic toxicity and reduced smog production potential.
* Este producto cumple con los requisitos de Green Seal™, en cuanto a su norma ecológica para limpiadores industriales e institucionales, según su toxicidad reducida para los seres humanos y la vida acuática y su potencial de smog restringido.

24 COMPASS NEUTRAL FLOOR CLEANER

Where It Cleans

Compass Neutral Floor Cleaner is a safe and effective cleaner for marble, slate, granite, terrazzo, travertine, linoleum, vinyl composition tile, finished floors, wood floors, ceramic tile, concrete floors and any surface not harmed by water alone. An ideal product for use in hospitals, schools, kitchens, restrooms, shower rooms, hotels, offices, fitness centers and most every kind of facility where a neutral range pH product is desirable.

Technical Data

Packaging (concentrate)	2/2 Liters per case
Product Number	13168
Physical State	Liquid
Color	Clear Yellow
Odor	Low
pH	4.5 - 5.5
VOC's	< 1%
Foam Level	Ultra low
Freeze/Thaw Stability	Excellent
Solubility in Water	Complete
RTU Yield Low-Flow	804 Quarts per case
RTU Yield High-Flow	201 Gallons per case



CONTAINS H₂O₂ Hydrogen Peroxide

NAVIGATOR 2-Liter bottles are designed to be used in the NAVIGATOR Dilution Control System.

NAVIGATOR

Dilution Control System



Product Description

Infinity Glass Cleaner is a highly concentrated glass and light utility cleaner that dissolves, suspends and removes soil from glass and other hard surfaces. This product is environmentally preferred, effective and leaves no residue there by helping to prevent re-soiling. Glass and Surface Cleaner can be used in a spray and wipe or sponge and squeegee application and contains no ozone depleting compounds and is non-toxic to aquatic life.

Infinity Glass Cleaner has been 3rd party certified by Green Seal™ according to GS-37 Environmental Standard.

Why It's A Better Cleaner

- Highly concentrated - Multiple applications
- Film free - Helps prevent re-soiling
- Contains no ozone depleting compounds - Safer for the environment
- Non flammable, non combustible - User friendly

How It Cleans

This product is formulated to work effectively with cold water. Cold water is recommended to help save energy used to heat water.



1. Dispense precisely diluted glass cleaner into an empty and properly labeled Navigator RTU #25 Infinity Glass Cleaner container.



2. Apply solution to surface to be cleaned.
3. Allow this product time to penetrate and disperse the soil and contaminant.



4. Scrubbing with a sponge, cloth, pad or brush may speed up the cleaning action.
5. Once soils are loosened simply wipe or wash away with a cloth or water. No rinsing is necessary.

25 INFINITY GLASS CLEANER

Where It Cleans

Infinity Glass Cleaner can be used for a wide range of applications such as glass, mirrors, chrome, stainless steel, Plexiglas, formica, plastic, windows, aluminum, glazed porcelain, enamel, appliances and virtually every hard surface. An ideal product for the lodging, health care, state and federal offices, restaurants, cafeterias, institutional kitchens and industrial facilities.

Technical Data

Packaging (concentrate)	2/2 Liters per case
Product Number	13169
Physical State	Liquid
Color	Clear Blue
Odor	Low
pH	12.0 - 13.0
VOC's	< 1%
Foam Level	Low
Freeze/Thaw Stability	Excellent
Solubility in Water	Complete
RTU Yield Low-Flow	516 Quarts per case
RTU Yield High-Flow	129 Gallons per case



* This product meets the Green Seal™ environmental standard for industrial and institutional cleaners based on its reduced human and aquatic toxicity and reduced smog production potential.

* Este producto cumple con los requisitos de Green Seal™, en cuanto a su norma ecológica para limpiadores industriales e institucionales, según su toxicidad reducida para los seres humanos y la vida acuática y su potencial de smog restringido.

NAVIGATOR 2-Liter bottles are designed to be used in the NAVIGATOR Dilution Control System.

NAVIGATOR

Dilution Control System



Product Description

Summit is a hydrogen peroxide, heavy duty cleaner and is formulated to meet strict environmentally preferable requirements without sacrificing performance. Summit is a preferable alternative to conventional Butyl or other water based solvent cleaners and degreasers. It quickly removes petroleum based soils such as grease, grime and oil deposits in factories and warehouses. It is also extremely effective against protein type soils found in food processing plants and institutional kitchens. It can be used in a conventional mop and bucket operation, automatic scrubber or pressure washer.

Summit Heavy Duty Cleaner has been 3rd party certified by Green Seal™ according to GS-37 Environmental Standard and is recognized by the U.S. Environmental Protection Agency Design for the Environment (DfE) Formulator Initiative.

Why It's A Better Cleaner

- Green Seal Certified - Environmentally preferred
- Concentrated - Multiple applications
- Cold water effective - Energy savings
- Contains oxygen boosters - No unpleasant fumes

How It Cleans

This product is formulated to work effectively with cold water. Cold water is recommended to help save energy used to heat water.



1. Dispense precisely diluted heavy duty cleaner into an empty and properly labeled Navigator RTU #26 Summit Heavy Duty Cleaner container.



2. Apply solution to surface to be cleaned.
3. Allow this product time to penetrate and disperse the soil and contaminant.



4. Scrubbing with a sponge, cloth, pad or brush may speed up the cleaning action.

5. Once soils are loosened simply wipe or wash away with a cloth or water. No rinsing is necessary.



* This product meets the Green Seal™ environmental standard for industrial and institutional cleaners based on its reduced human and aquatic toxicity and reduced smog production potential.



* This product meets the Green Seal™ environmental standard for industrial and institutional cleaners based on its reduced human and aquatic toxicity and reduced smog production potential.

* Este producto cumple con los requisitos de Green Seal™, en cuanto a su norma ecológica para limpiadores industriales e institucionales, según su toxicidad reducida para los seres humanos y la vida acuática y su potencial de smog restringido.

26 SUMMIT HEAVY DUTY CLEANER

Where It Cleans

Removes grease in kitchens around stoves, ovens and vent hoods. General cleaning of floors, walls, ceramic tile, glazed porcelain, stainless steel, terrazzo, granite, concrete and enameled metal. Degreases shop tools, equipment and machinery. Effective against Industrial grease and oil, animal fats, permanent marker and ink. Effective against most water or oil based soils.

Technical Data

Packaging (concentrate)	2/2 Liters per case
Product Number	13170
Physical State	Liquid
Color	Clear Green
Odor	Low
pH	3.5 - 4.5
VOC's	< 3%
Foam Level	Low
Freeze/Thaw Stability	Excellent
Solubility in Water	Complete
RTU Yield Low-Flow	516 Quarts per case
RTU Yield High-Flow	129 Gallons per case



NAVIGATOR 2-Liter bottles are designed to be used in the NAVIGATOR Dilution Control System.

NAVIGATOR

Dilution Control System



Product Description

Fresh Start is a hydrogen peroxide, washroom tub & tile cleaner and is formulated to meet strict environmentally preferable requirements without sacrificing performance. It is a concentrated washroom cleaner for removal of soap scum, body oil, mildew, lime, water scale and rust deposits on porcelain, tile, ceramic tile and fiberglass surfaces. Fresh Start will remove unpleasant odors including urine and mildew from porous surfaces like floors and walls. This product can be safely used daily on porcelain, porcelain enamel, painted surfaces, aluminum or stainless steel without etching or damaging them and works effectively in cold water.

Fresh Start Washroom Tub & Tile Cleaner has been 3rd party certified by Green Seal™ according to GS-37 Environmental Standard.

Why It's A Better Cleaner

- Highly concentrated product - Economical to use
- Counteracts odors - Pleasant results
- Versatile formula - Multiple applications
- Surface friendly - Safe on most surfaces

How It Cleans

This product is formulated to work effectively with cold water. Cold water is recommended to help save energy used to heat water.



1. Dispense precisely diluted washroom tub and tile cleaner into an empty and properly labeled Navigator RTU #27 Fresh Start Washroom Tub and Tile Cleaner container.
2. Apply solution to surface to be cleaned.
3. Allow this product time to penetrate and disperse the soil and contaminant.
4. Scrubbing with a sponge, cloth, pad or brush may speed up the cleaning action.
5. Once soils are loosened simply wipe or wash away with a cloth or water. No rinsing is necessary.



* This product meets the Green Seal™ environmental standard for industrial and institutional cleaners based on its reduced human and aquatic toxicity and reduced smog production potential.
 * Este producto cumple con los requisitos de Green Seal™, en cuanto a su norma ecológica para limpiadores industriales e institucionales, según su toxicidad reducida para los seres humanos y la vida acuática y su potencial de smog restringido.

27 FRESH START WASHROOM TUB & TILE CLEANER

Where It Cleans

Fresh Start Washroom Tub and Tile Cleaner can be used on fixtures in restrooms, locker rooms, shower areas, toilet bowls, urinals, chrome, glazed ceramic, sinks. It cleans and deodorizes in one labor saving step and is especially effective on soap scum, water scale and rust deposits and body oils. It leaves no sticky residue to attract re-soiling. It is effective on oil and water bases soils.

Technical Data

Packaging (concentrate)	2/2 Liters per case
Product Number	13171
Physical State	Liquid
Color	Clear/Purple
Odor	Low
pH	4.5 - 5.5
VOC's	< 1%
Foam Level	Low
Freeze/Thaw Stability	Excellent
Solubility in Water	Complete
RTU Yield Low-Flow	516 Quarts per case
RTU Yield High-Flow	129 Gallons per case



CONTAINS **H₂O₂** Hydrogen Peroxide

NAVIGATOR 2-Liter bottles are designed to be used in the NAVIGATOR Dilution Control System.