



Shown Here: Happy Days, Caution Yellow border



Shown Here: Sunrise, Bordeaux



Distributed By:



CS-601
1/09

Mats & Matting Solutions

Contents:

Entrance Mat Solutions.....page 3
EarthCare Mat Solutions.....page 4 & 5
Anti-Fatigue Mat Solutions.....page 10
Slip & Fall Mat Solutions.....page 12
Chemical Resistant Guide.....page 13
Mat Placement Guide.....page 13
Mat Selection Guide.....page 14

Improve Indoor Air Quality

- 80% of dirt and soil found in a building is tracked in from the outside.

Stop Dirt at the Door!

- Every pound of dirt stopped by your entrance mat system reduces your total cleaning costs!
- Carpets stay cleaner longer; extending the life of your carpet.
- Your floors stay shiny; floor finish lasts longer, resulting in less labor to strip/refinish floors!

3-Step Defense against Dirt

- 1 Stop dirt outside the door.
- 2 Scrape finer debris and absorb moisture.
- 3 Wipe away dust and more moisture; enhance the appearance of your facility.

Slip & Fall Prevention

Did you know?

Slip and fall injuries require costly medical care, lost time and reduced productivity.

Anti-Slip Mats offer an economical step toward slip and fall prevention.

Workplace Improvement

Did You Know?

Anti-Fatigue Matting can:
- reduce worker fatigue.
- increase productivity by 20%.
- improve worker safety.

Mats are an Integral Part of Green Building Programs

Soil is everywhere. It is a part of the earth we live on and managing it is a vital art of our everyday existence. The U.S. Green Building Council has developed a rating system for new and existing buildings to encourage building owners to earn credit for meeting certain housekeeping criteria. Strategies include the creation and maintenance of entrance systems and mats that prevent particles from entering the building. Recommendations include a minimum of 10-12 feet of quality matting products at entrances. At the heart, of an entrance system, is prevention of contaminants from entering the building. 80% of all soil is tracked in on the feet of people entering the building. Proper size, construction and placement of the entrance mats will maximize the dirt stopping potential at the door.

Name	Description	Use	Backing Design	Custom Options	Rated	Page #
Scraping Mats						
Tuff Cleat	Molded rubber treads scrape soil while channeling moisture away	Out	Rubber	No	✓✓✓	3
Tuff-Tip	Thousands of rubber scraping tips per square foot	Out	Rubber	No	✓✓	3
Brush Clean	Effectively filters soil away from traffic sources	Out	Rubber	Yes	✓✓✓	3
Scraping & Absorbing Mats						
Sunrise Renew	Eco friendly matting attacks dirt and traps moisture	In/Out	Cleated	Yes	✓✓✓	4
Sunrise	Durable performance in attractive styling	In/Out	Cleated	Yes	✓✓	4
Defender Renew	Eco friendly matting traps moisture and dirt at entryways	In/Out	Cleated	Yes	✓✓✓	5
Defender	Multi-directional pattern attacks heavy dirt and traps moisture	In/Out	Cleated	Yes	✓✓	5
Soil Stopper	Effectively removes heavy soil, dust and moisture day after day	In/Out	Cleated	Yes	✓✓	6
Avant Guard	Enhanced appearance combined with excellent performance	In/Out	Cleated	Yes	✓✓	6
V-Mat	Stylish, multi-directional herringbone design scrapes and absorbs	In	Smooth	Yes	✓✓	7
Walk-Off	Traditional bi-level ribbed design in multiple colors	In	Smooth	Yes	✓	7
Wiping & Absorbing Mats						
Tough Grip	High quality continuous nylon yarn; cleated rubber backing	In	Cleated	Yes	✓✓	8
Step III	High quality continuous nylon yarn; smooth vinyl backing	In	Smooth	Yes	✓✓	8
Essex	Designed for moderate to light traffic locations	In	Smooth	Yes	✓	8
Image	Enhance your entrance area with custom logo mats	In	Cleat/Smooth	Yes	✓✓✓	9
Anti-Fatigue Mats						
7th Heaven	Heavy-duty Nitrile rubber surface for best chemical resistance	In	Cell Foam	Yes	✓✓✓	10
Happy Days	Two different surfaces that are linkable	In	Cell Foam	No	✓✓✓	10
Blockade	Diamond patterned surface for durability and slip resistance	In	Nitrile/PVC	Yes	✓✓	11
Foot Cushion	Excellent value for multiple moderate-use applications	In	Vinyl Foam	Yes	✓	11
Easy Flow	Closed-cell rubber for comfort and chemical resistance	In	Rubber	No	✓✓✓	12
Slip & Fall Protection Mats						
Rib Safe	Ribbed vinyl design for anti-slip protection	In	Vinyl	Yes	✓	12

✓✓✓ Top rated performance with excellent cost in use ✓✓ Quality selection with high performance standards
✓ Good choice for low traffic locations, budget-friendly



This chart indicates the relative chemical resistance based on limited or intermittent exposure.

	Acetic Acid	Acetone	Animal Fat	Brake Fluid	Butyl Alcohol	Chlorine (wet)	Cutting Oil	Formaldehyde	Gasoline	Hydraulic Fluid	Hydrochloric Acid	MEK	Mineral Oil	Motor Oil	Nitric Acid	Butyl Acetate	Sodium Hydroxide	Sulfuric Acid - 25%	Transmission Fluid	Vegetable Oil	Xylene
Tuff Cleat	2	2	2	1	1	2	2	1	1	1	2	4	1	1	1	2	1	2	1	1	4
Tuff-Tip	2	3	1	2	1	4	2	3	2	3	2	4	2	2	4	2	2	2	2	2	3
Rib Safe	1	4	3	3	2	2	2	3	3	3	3	4	2	2	4	2	1	2	2	2	4
7th Heaven	1	4	3	1	2	3	2	1	1	1	3	4	1	1	1	4	2	1	1	1	4
Happy Days	2	2	1	1	1	2	2	1	1	1	2	4	1	1	1	2	1	2	1	1	4
Foot Cushion	3	4	3	2	1	3	2	2	2	2	3	4	2	2	2	4	2	2	2	3	4
Blockade	1	4	3	1	2	3	2	1	1	1	3	4	1	1	1	4	2	1	1	1	4

1 - No Effect 2 - Minor Effect 3 - Moderate Effect 4 - Not Recommended

Note: All mats pass the DOC FF2-70 flammability test.

For optimal performance, follow the suggested areas of usage for each of the mats.

	Dry Areas	Dry Areas with Grit & Heavy Soil	Wet Areas with Moderate Soil	Wet Areas with Oils	Animal Grease	Machine Shops
Tuff Cleat	★★★★★	★★★★★	★★★★★	★★★★★	★★★★★	★★★★★
Tuff-Tip	★★★★★	★★★★★	★★★★	★	★	★★
Happy Days	★★★★★	★★★★★	★★★★★	★★★★★	★★★★★	★★★★★
Rib Safe	★★★★	★★★★	★★★	★★	★	★
7th Heaven	★★★★★	★★★★★	★★★★★	★★★★★	★★★★★	★★★★★
Blockade	★★★★	★★★★	★★★★	★★	★★	★★
Foot Cushion	★★	★★	★★	★	★	★
Easy Flow	★★★★★	★★★★★	★★★★★	★★★★★	★★★★★	★★★★★

★★★★★
Best

★★★★
Better

★★★
Good

★
Not Recommended

Mat Selection Assistance:

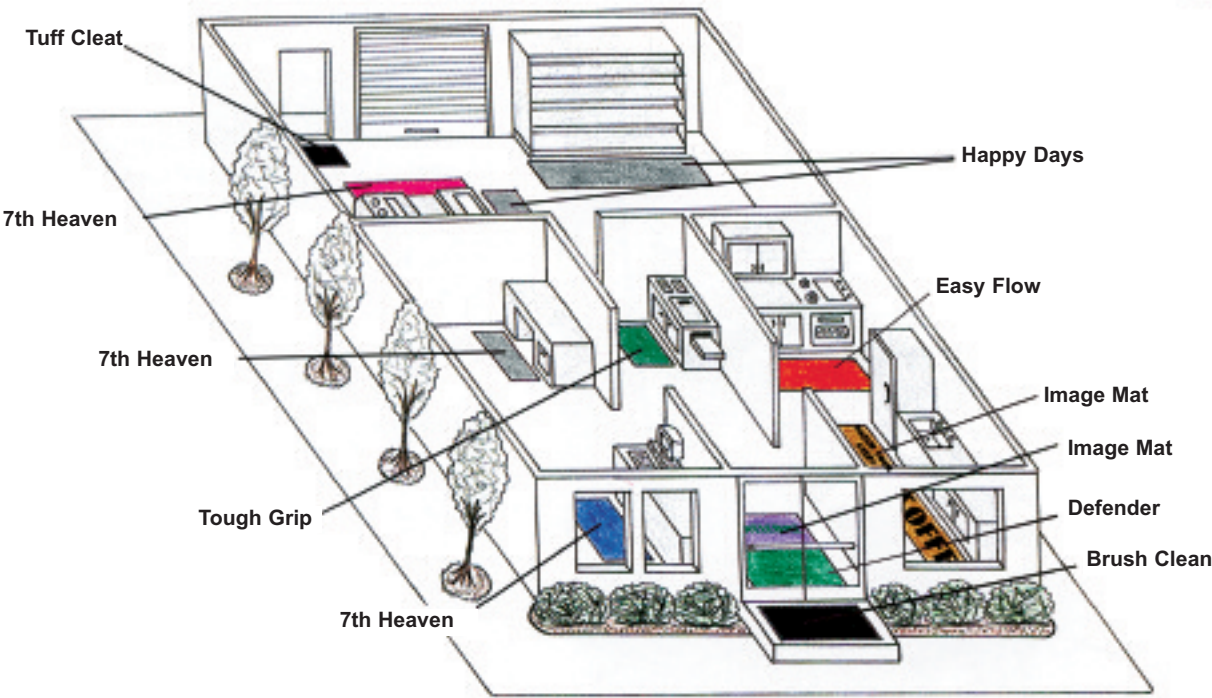
Performance Rating System

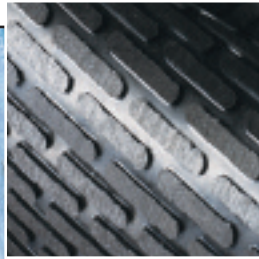
Often there are multiple choices in mats. To help you make the best selection, we have performance-rated each of our mats. A system of check marks (✓) is displayed in this brochure.

- ✓✓✓ Top rated performance with excellent cost in use
- ✓✓ Quality selection with high performance standards
- ✓ Good choice for low traffic locations, budget-friendly



Mat Placement Guide





Tuff Cleat ✓✓✓

Molded rubber treads scrape soil while channeling moisture away

- Black Nitrile rubber will not curl or crack and withstands freezing temperatures.
- Beveled edges hold moisture below foot traffic.
- Clean by brushing, hosing or vacuuming.
- Sizes: 4' x 8', 6' x 6', 6' x 8'
- Customize: Add your color logo or custom design.

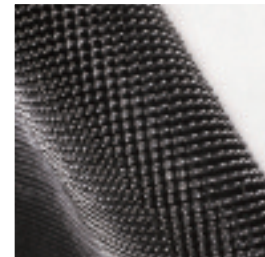
- Certified slip resistant by the National Floor Safety Institute.



Tuff-Tip ✓✓

Thousands of rubber scraping tips per square foot; traps moisture

- Heavy-duty 5/8" black rubber construction traps soil and moisture.
- Beveled edges help prevent tripping and meet OSHA safety standards.
- May also be used as a heavy-duty anti-fatigue mat.
- Sizes: 24" x 32", 32" x 39", 36" x 72"



Brush Clean ✓✓✓

Long-wearing coarse fiber system aggressively scrapes dirt and moisture from shoes

- High performance, 100% solution-dyed nylon will not fade in the sunlight.
- Durable, 100% rubber backing will not crack or curl.
- Effectively filters soil away from traffic sources.
- Designed for outdoor use; same fiber system that is used on athletic fields.
- Dries quickly.
- Comes in 3', 4' and 6' widths, in four colors, that compliment any decor.
- Sizes: 3' x 6', 3' x 8', 3' x 10', 3' x 12', 3' x 16', 3' x 20', 4' x 8', 4' x 12', 4' x 16', 4' x 20', 6' x 16'
- Customize: Standard widths may be special cut up to 60'.
- Certified slip resistant by the National Floor Safety Institute.



Easy Flow ✓✓✓

Provides superior anti-fatigue properties for comfort and ergonomic benefit

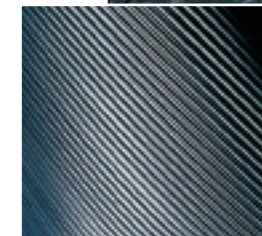
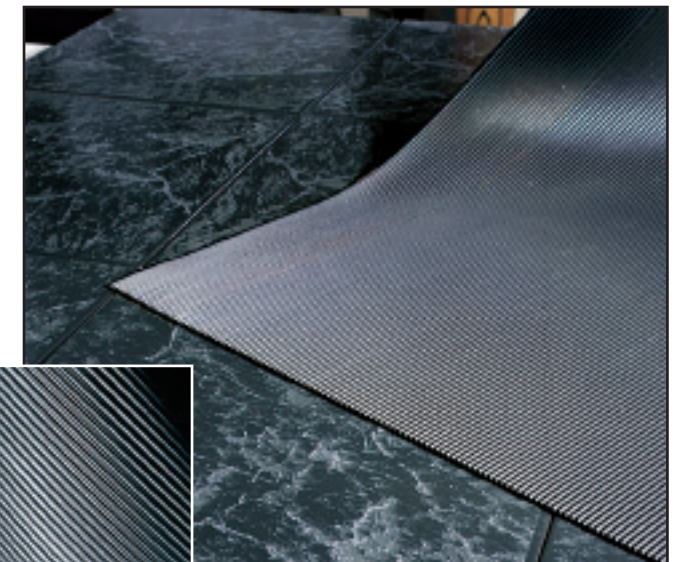
- 100% high density, closed-cell Nitrile rubber.
- Maximum resistance to oils, greases, chemicals and animal fats.
- Lightweight and easy to clean by pressure washing or hosing off.
- Beveled to minimize trip and fall accidents.
- Anti-microbial treated to guard against odors and degradation.
- Flow through design makes this mat perfect for wet applications.
- Anti-static and welding safe.
- Sizes: 2' x 3', 3' x 5', 3' x 9', 4' x 6'



Rib Safe ✓

Ribbed vinyl design for anti-slip protection

- Molded-in ridges create a durable anti-slip surface.
- Ribs channel dirt and moisture for easy removal.
- Solid vinyl protects and insulates from cold floor.
- Available in solid black.
- Sizes: 3' and 4' widths up to 105'



Refer to the Chemical Resistance Guide, Mat Placement Guide and Mat Selection Guide on pages 13 & 14 for additional information.



Blockade ✓✓

Anti-microbial and Anti-fatigue mat

- Constructed of 100% Nitrile/PVC closed cell foam to provide superior anti-fatigue properties for employee comfort and ergonomic benefits.
- Diamond patterned surface is more than twice as durable as traditional PVC foam mats and helps to reduce slip and fall accidents.
- Anti-microbial treated with beveled borders for safe transition from floor to mats.
- Cost effective alternative to traditional PVC foam mats.
- 5/8" thickness.
- Ideal for use in warehouses, picking lines, assembly lines, work stations, check out stations, labs or any other dry work environments.
- Available with or without holes.
- Custom lengths up to 45' are available. (Not in Price Book)



Foot Cushion ✓

Closed cell vinyl foam provides excellent value for moderate-use applications

- Comfort, safety and noise control in a single mat.
- Closed cell vinyl foam insulates from cold floor.
- Beveled edges meet OSHA standards for trip prevention.
- Available in 3/8" thickness in charcoal.
- Sizes: 2' x 3', 3' x 5', 3' x 12', 2' x 60', 3' x 60', 4' x 60'
- Customize: Standard widths may be special cut up to 60' long.



Sunrise Renew ✓✓✓

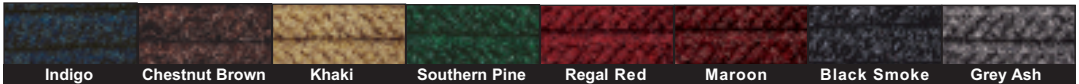
ECO friendly, multi-directional pattern attacks dirt and traps moisture to keep floors dry



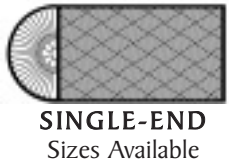
- The Sunrise Renew Collection features a 30 oz. 100% Post Consumer recycled PET polyester fiber reclaimed from drink bottles. Four half liter bottles are recycled for every square foot.
- Reinforced rubber backing keeps the face pattern from crushing.
- Available with rubber or fabric-covered beveled edging that holds moisture and dirt on mat for later removal.
- Recessed grooves contain excess moisture below traffic surface.
- Ideal for indoor/outdoor use.
- Backing made from 15-20% Post Consumer recycled rubber reclaimed from tires. Available in cleated rubber backing to help minimize movement on carpet or smooth back is recommended on hard surfaces. Custom sizes to 61' long.
- Clean with vacuum, hose or pressure washer.
- Qualifies for LEED Certification Points.
- Certified slip resistant by the National Floor Safety Institute.



COLORS FOR SUNRISE RENEW:



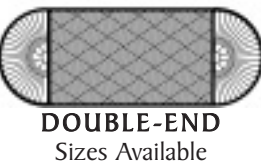
Sizes listed for Sunrise and Sunrise Renew



3' x 5.5'
3' x 10'
4' x 5.9'
4' x 10.5'
6' x 7'
6' x 11.6'



3' x 1.8'
4' x 2.3'
6' x 3.3'



3' x 7.1'
3' x 11.7'
4' x 8'
4' x 12.6'
6' x 10.1'

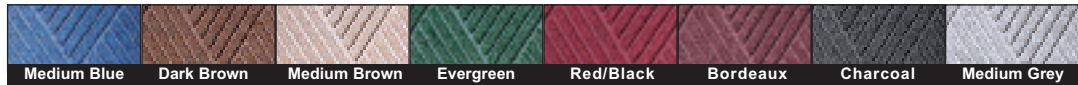
Sunrise ✓✓

Durable performance in an upscale, stylish design with shapes that accommodate any area

- Durable 24 oz. polypropylene fiber traps moisture from shoes, reducing slip hazards.
- Unique shapes add a dynamic finishing touch.
- Reinforced rubber backing keeps the face pattern from crushing.
- Beveled edging and recessed grooves retain excess moisture.
- Backing made from 15-20% Post Consumer recycled rubber reclaimed from tires. Available in cleated rubber backing to help minimize movement on carpet or smoothback is recommended on hard surfaces.
- Ideal for indoor/outdoor use.
- Clean with vacuum, hose or pressure washer.
- Custom sizes to 64' long.
- Certified slip resistant by the National Floor Safety Institute.



COLORS FOR SUNRISE:





Defender Renew ✓✓✓

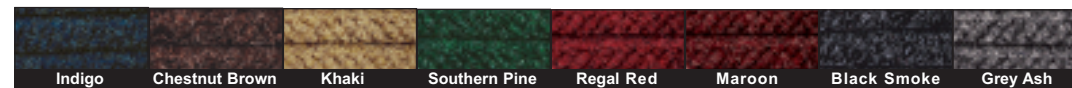
ECO friendly matting traps moisture and dirt at entryways



- Defender Renew features a 30 oz. 100% Post Consumer recycled PET polyester fiber reclaimed from drink bottles.
- Reinforced rubber backing keeps the face pattern from crushing.
- Available with rubber or fabric-covered beveled edging that holds moisture.
- Recessed grooves retain excess moisture.
- Ideal for indoor/outdoor use.
- Backing made from 15-20% consumer recycled rubber reclaimed from tires. Backing with gripper tips for slip-resistance will not crack and remains flexible in cold weather.
- Clean with vacuum, hose or pressure washer.
- Sizes: 2' x 3', 3' x 5', 3' x 10', 4' x 6', 4' x 10', 6' x 8.4', 6' x 12.2', 6' x 20'. Custom sizes to 61' long.
- Qualifies for LEED Certification Points.
- Certified slip resistant by the National Floor Safety Institute.



COLORS FOR DEFENDER RENEW:



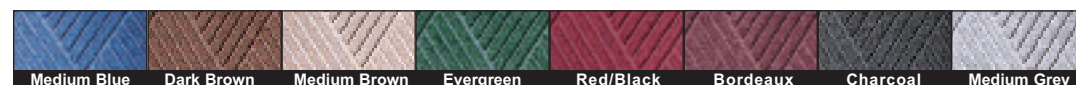
Defender ✓✓

Raised multi-directional pattern attacks dirt and traps moisture to keep floors dry

- Durable 24 oz. polypropylene fiber traps moisture from shoes, reducing slip hazards.
- Reinforced rubber backing keeps the face pattern from crushing.
- Available with rubber or fabric-covered beveled edging that contains moisture and dirt on mat.
- Ideal for indoor/outdoor use.
- 100% Post Consumer recycled PET polyester fiber reclaimed from drink bottles. Four half liter bottles are recycled for every square foot.
- Clean with vacuum, hose or pressure washer.
- Sizes: 2' x 3', 3' x 5', 3' x 10', 4' x 6', 4' x 10', 6' x 8.4', 6' x 12.2', 6' x 20'.
- Custom sizes to 61' long.
- Certified slip resistant by the National Floor Safety Institute.



COLORS FOR SUNRISE:

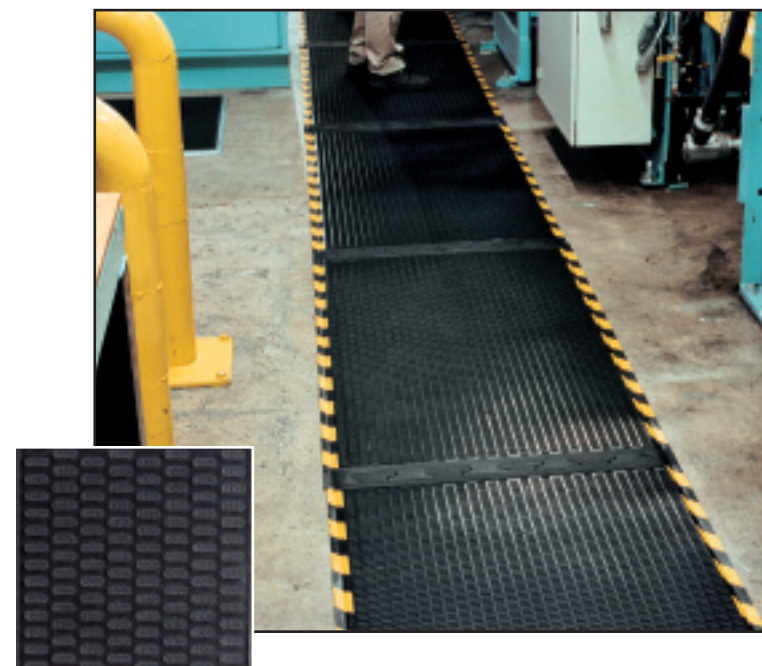
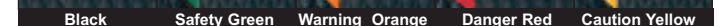


Anti-fatigue mats reduce the strain on the back, feet and legs of workers who must stand as they work. Employee comfort increases production and reduces absenteeism due to foot and leg problems. Anti-fatigue mats often provide slip resistant surfaces for added safety benefits.

7th Heaven ✓✓✓

Heavy-duty Nitrile rubber diamond tread design is grease proof

- Solid Nitrile rubber surface for best chemical resistance.
- Static dissipative.
- Beveled edges and curved corners create a safer transition from mat to floor.
- Rubber top is molded to the high quality foam back.
- Raised diamond pattern surface for increased safety.
- Welding safe.
- Available in solid black or black with striped safety borders in: Safety Green, Warning Orange, Danger Red or Caution Yellow.
- Sizes: 2' x 3', 3' x 5', 3' x 12', 4' x 6', 4.8' x 8'.
- Customize: 2', 3', 4', and 4.8', widths up to 60'.
- Certified slip resistant by the National Floor Safety Institute.



Happy Days ✓✓✓



Nitrile rubber Anti-Fatigue mat for comfort and chemical resistance

- Foam core encapsulated in solid Nitrile rubber.
- Comes in two different surfaces:
Grip Surface: wet areas, maximum traction and scraping.
Texture Surface: damp to dry areas.
- Anti-static.
- Welding safe.
- Both top surfaces available in 3' x 5' sections that may link together.
- Five border colors: Black, Safety Green, Warning Orange, Danger Red or Caution Yellow.
- Sizes: 2' x 3', 3' x 5', 3' x 10' and Linkable 3' x 5'.
- Certified slip resistant by the National Floor Safety Institute.



Image Mat ✓✓✓

Custom logo mats deliver special messages for optimal function and performance

- Promote your company with a dynamic custom mat featuring your company name, logo or a special message.
- Durable continuous filament, anti-static high-twist nylon face.
- Available in smooth or cleated rubber backing or smooth vinyl backing.
- Protected with soil-releasing treatment for easy cleaning and extended color retention.
- Sizes: 2' x 3', 3' x 4', 3' x 5', 3' x 10', 4' x 6', 4' x 8'
- Customize: Available in 3', 4', 5' and 6' widths with length up to 20'.
- No set-up or art charges.
- Fast delivery; ship in 1 week.
- Certified slip resistant by the National Floor Safety Institute.



Custom Design Options

- Computer controlled dye program produces fine detail, shading and 3-D images.
- Choose up to 26 colors.



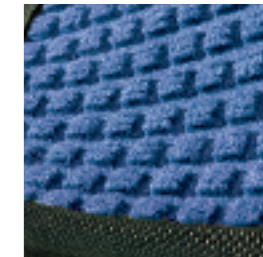
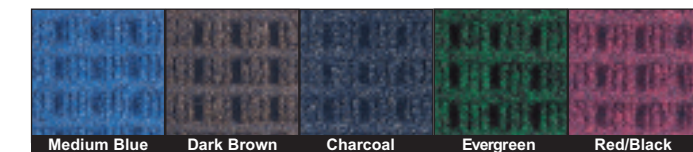
Soil Stopper ✓✓

Raised design effectively removes heavy soil, dust and moisture day after day

- Durable 100% polypropylene.
- Fabric dries quickly and will not fade or rot.
- Raised pattern is covered with stain and UV resistant polypropylene fabric.
- Rubber borders contain moisture and soil.
- Rubber backing with cleated tips for non-skid protection.
- Cleaned easily with vacuum, hose or pressure washer; not launderable.
- Sizes: 2' x 3', 3' x 4', 3' x 5', 3' x 10', 4' x 6', 4' x 10', 6' x 8', 6' x 12'
- Customize: Standard widths up to 20' long in 1' increments.
- Certified slip resistant by the National Floor Safety Institute.



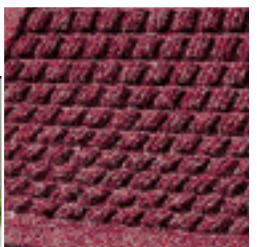
COLORS FOR BOTH SOIL STOPPER & AVANT GUARD:



Avant Guard ✓✓

Fabric enhanced appearance combined with raised Soil Stopper performance

- Raised high-performance design with fabric-covered borders for an attractive appearance.
- Fabric-covered border that matches the mat color selection.
- Available in the same color and size selections as the Soil Stopper.
- Sizes: 2' x 3', 3' x 4', 3' x 5', 3' x 10', 4' x 6', 4' x 10', 6' x 8', 6' x 12'
- Certified slip resistant by the National Floor Safety Institute.





V-Mat ✓✓

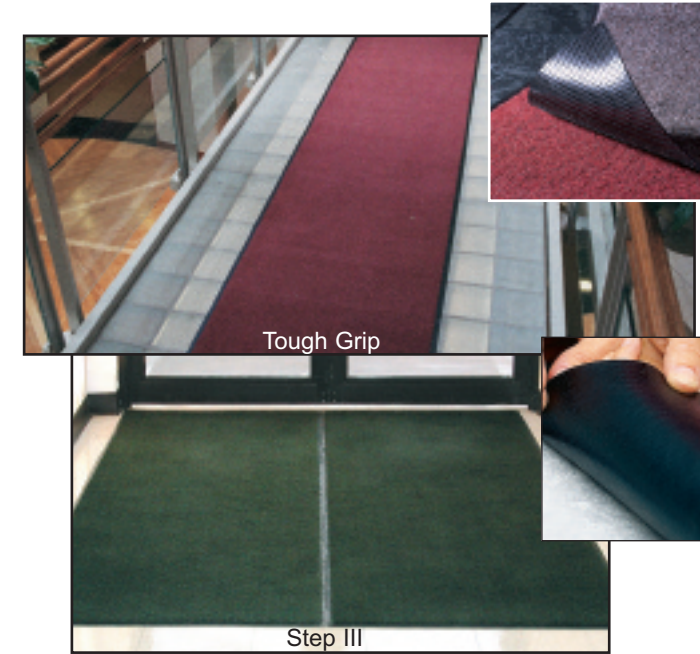
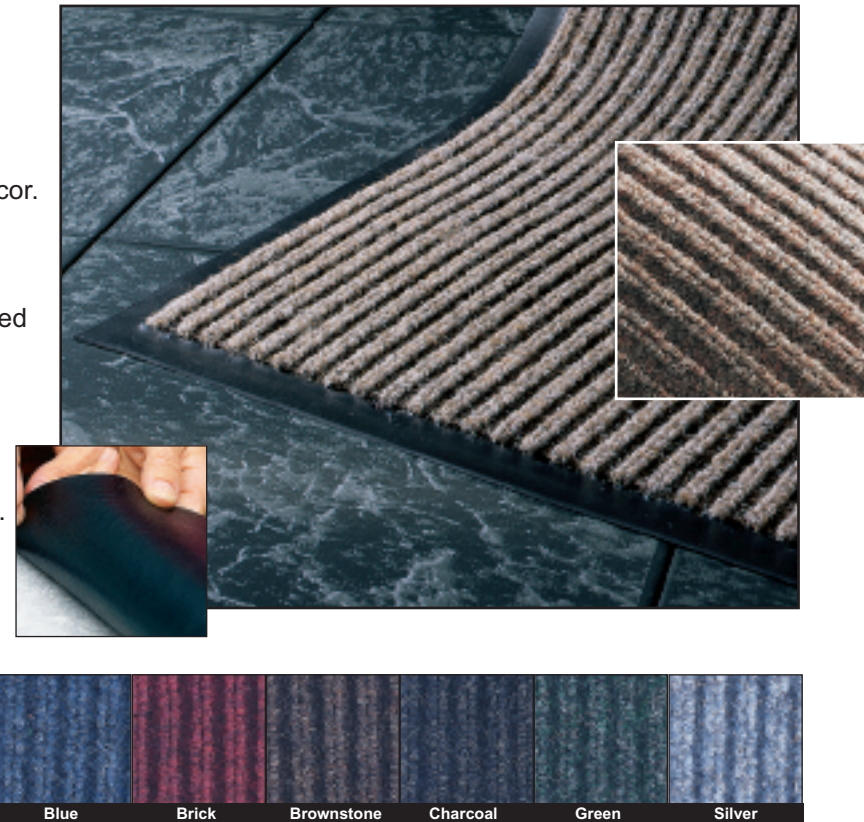
Herringbone design for an enhanced appearance

- Removes soil and moisture from footwear.
- Raised design pattern collects and holds debris.
- Polypropylene fabric resists stains.
- Smooth vinyl backing holds mat in place on hard flooring surfaces.
- Fast drying and easy to clean with vacuum, hose or pressure washer; not launderable.
- Sizes: 2' x 3', 3' x 4', 3' x 5', 3' x 6', 3' x 10', 4' x 6', 4' x 8', 4' x 10', 3' x 60', 4' x 60', 6' x 60'
- Customize: Standard widths to any length up to 60'.

Walk-Off Mat ✓

Ribbed design provides good soil removal

- Multiple color options accommodate any decor.
- Moisture and soil are trapped in recessed areas until removed.
- Smooth, non-skid vinyl backing is best suited for use on hard flooring.
- Polypropylene face yarn maintains attractive appearance longer.
- Dries quickly and is cleaned by vacuum, hose or pressure washing; not launderable.
- Sizes: 2' x 3', 3' x 4', 3' x 5', 3' x 6', 3' x 10', 4' x 6', 4' x 8', 4' x 10', 3' x 60', 4' x 60', 6' x 60'
- Customize: Standard widths to any length up to 60'.



Tough Grip & Step III ✓✓

*Tough Grip mats have cleated rubber backing
Step III mats have a smooth vinyl backing*

- Even fiber height provides maximum scraping and improves vacuuming suction efficiency. Suitable for extraction and laundering.
- High quality continuous nylon yarn is tightly twisted and heat set for exceptional durability.
- Resists staining.
- Sizes: 2' x 3', 3' x 5', 3' x 10', 4' x 6', 4' x 8'
- Customize: 3', 4', 5' and 6' widths up to 40' in length.
- Certified slip resistant by the National Floor Safety Institute.



COLORS FOR BOTH TOUGH GRIP & STEP III:



* Available in 6' widths.



Essex ✓

Olefin yarn for moderate to light traffic locations

- Continuous filament olefin yarn with a face weight of 20 oz. per square yard.
- Wipes dust and absorbs moisture from feet in indoor locations.
- Smooth vinyl backing is non-skid on hard flooring surfaces.
- Easily maintained by daily vacuuming and suitable for extraction cleaning; dries quickly.
- Sizes: 2' x 3', 3' x 4', 3' x 5', 3' x 10', 4' x 6', 4' x 8', 3' x 60', 4' x 60', 6' x 60'
- Customize: Standard widths up to 60' long.



COLORS FOR ESSEX

